

NICKEL INITIATIVE: Talks and Webinars

CMDC's COVID-19 response and social development programs: status, best practices and learnings

September 9, 2020



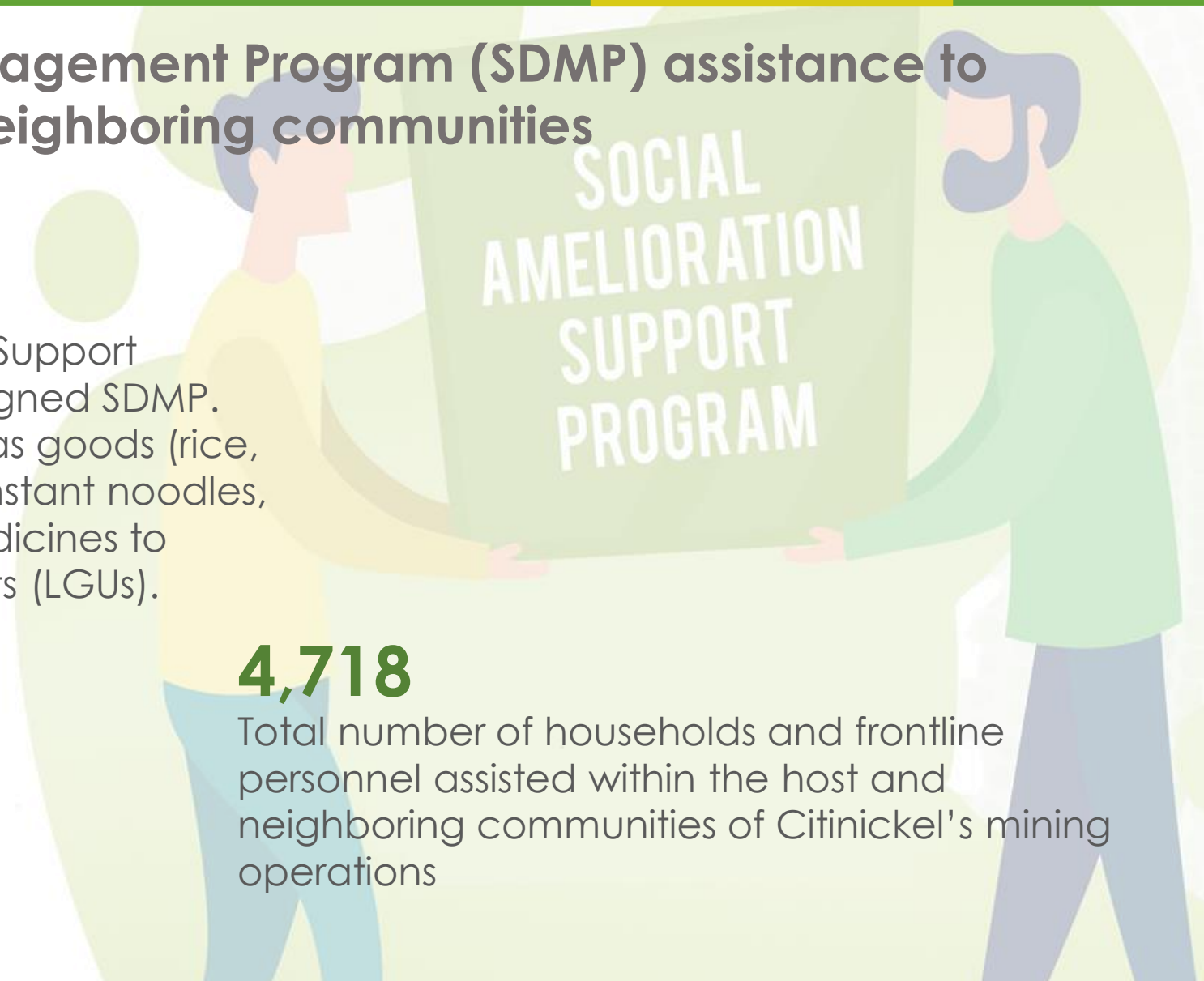
Social Development and Management Program (SDMP) assistance to Covid-19 affected host and neighboring communities

PhP 3.07-M

Utilized for the Social Amelioration Support Program under the approved realigned SDMP. Provision of basic necessities such as goods (rice, milk, vegetables, canned goods, instant noodles, vitamins and over-the-counter medicines to support the Local Government Units (LGUs).

4,718

Total number of households and frontline personnel assisted within the host and neighboring communities of Citinickel's mining operations





Distribution of 1,000 food packs to Barangay San Isidro, Narra





Republic of the Philippines
PROVINCIAL GOVERNMENT OF PALAWAN
Office of the Governor
Puerto Princesa City, Palawan

June 01, 2020

MS. CAROLINE L. TANCHAY
Chairperson
Citinickel Mines & Dev'l. Corp.

Dear *Ms. Tanchay*:

Greetings from the Provincial Government of Palawan!

This has reference to the generous donation of your company **CITINICKEL MINES AND DEVELOPMENT CORPORATION** to the Provincial Government of Palawan.

On behalf of the people of Palawan and the entire Provincial Government, please accept our sincere gratitude and deep appreciation for the 10,000 pcs. of rapid test kits that your company has generously given to us. During this time of extended community quarantine and with our local economy practically at a standstill, every help and assistance counts a lot especially coming from a highly respected private company such as yours.

Rest assured that your generosity will be put to good use and your in-kind donation will be properly distributed to our frontliners and our most vulnerable and underprivileged sectors.

Once again, thank you very much for your support in our efforts to help alleviate the suffering of our constituents from the dire effects of the COVID-19 pandemic.

May we take this opportunity to extend the assurances of our high esteem and best regards!

Very truly yours,


JOSE CH. ALVAREZ
Governor



10,000
Rapid Test Kits

Donated to the Provincial
Government of Palawan



Construction of one unit Child Development Center for the IP community of Brgy. Labog , Sofronio Española, Palawan



Financial Assistance to more than 50 San Isidro College Students as Scholarship Program



ASDMP 2020

Continuous support to Educational Programs for the Community